

# Riverdale Temple

**Riverdale  
Temple**

***Mitzvah  
Day 2010***

**Sunday,  
April 25, 2010**

**9:30 a.m.— 3:00 p.m**

Place 1st  
class stamp  
here

Mitzvah Day 2010  
Riverdale Temple  
4545 Independence Avenue  
Riverdale, NY 10471

Please join the congregation on Sunday, April 25th in performing acts of *gimilut chasadim* (loving kindness) in Riverdale and in the neighboring communities. Riverdale Temple members of *all* ages and friends & neighbors of members are encouraged to participate in

## **Mitzvah Day 2010.**

\*\*\*\*\*

In order to make our time as useful to the area agencies and institutions as possible, we have contacted them to determine how we can best assist them, and they have responded with the following activities, needs and requests. Let's not disappoint them! **Mitzvah Day 2010** activities will be held rain or shine! On the following page, you will find descriptions of **Mitzvah Day 2010** Opportunities & the Registration form. Please complete the registration form and select four activities in order of preference, which are of interest to you.

**Registration forms must be received (by mail or fax) at Riverdale Temple no later than 04/09/10.**

**This flyer can be folded, taped and mailed without an envelope.**

You will be notified by e-mail or telephone of your placement for

**Mitzvah Day 2010** and any other information you may need (i.e., driving directions, appropriate dress, etc.).

\_\_\_ Please check if you are willing to be an activity coordinator.

Specify site:\_\_\_\_\_

\_\_\_ Please check if you can help prepare for Mitzvah Day prior to 4/25/10

\_\_\_ Please check if you can provide transportation.

\_\_\_ Please check if you need transportation.

\_\_\_ Please check if you are enclosing a voluntary donation to support **Mitzvah Day 2010**.

*(Check should be made out to: Riverdale Temple & note that it is for Social Action Committee-Mitzvah Day 2010).*

# Mitzvah Day 2010 Opportunities/Registration Form

## MORNING ACTIVITIES

- \_\_\_\_\_ 1. POTS 9:30 -11:30 a.m. (Part of the Solution) (parents & children)  
 \* Prepare bagged lunches of sandwiches, cookies and fruit at Temple.
- NOTE: We need two people with van to deliver bagged lunches by 11:30 a.m. Sign here, if able.  
 \_\_\_\_\_
- \_\_\_\_\_ 2. Midnight Run  
 9:30 a.m. -12:00 p.m. at the Temple.  
 \* Make grooming kits for homeless men (parents and children)
- \_\_\_\_\_ 3. Big Brothers/Big Sisters Clothing Drive  
 9:30a.m. - 12:00 p.m. at the Temple  
 \* Help receive and sort men's , women's, boys', and girls' gently used clean clothing for all seasons.  
 \* Help maintain a list of donors.  
 \* Bag and label items
- \_\_\_\_\_ 4. Warm-Up America/Hadassah Hospital  
 9:30 a.m. -12:30 p.m. at the Temple.  
 \* Charity knitting of premie caps and squares. Materials donated by The Yarn Loft. Bring your needles, crochet hooks and yarn.
- \_\_\_\_\_ 5. Plant Sunflower seeds at Temple ( families, children and teens, adults).



- \_\_\_\_\_ 6. Assist with AFYI/Ben Franklin Democratic Club collection of medical supplies and equipment for Haiti and African countries.

## AFTERNOON ACTIVITIES

- \_\_\_\_\_ 1. Schervier Nursing Home  
 1-3:00 p.m.  
 (4-6 volunteers)  
 \* Help out in community hall for Social Hour  
 \* Serve refreshments to residents  
 \* Socialize with residents  
 \* Play Board Games with residents
- \_\_\_\_\_ 2. Assist with AFYI/Ben Franklin Democratic Club collection of medical supplies and equipment for Haiti and African countries.



=====

## SUMMARY OF DONATIONS NEEDED:

**KRMH - Food & Hunger Project** - donations of boxed hot/cold cereals, canned soups and canned fruit, canned protein.

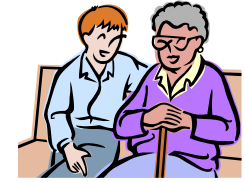
**Big Brothers/Big Sisters** - Gently used, clean clothing for men, women, children-all Seasons (please donate only what you would want to receive yourself.)

**POTS**-Fresh date jars of smooth peanut butter and jelly.

**Midnight Run** - small, travel size shampoo, deodorant, lotion, comb, mouthwash, soaps, toothbrushes, toothpaste.



*Riverdale Temple members, friends, and neighbors are welcome to participate in Mitzvah Day 2010!*



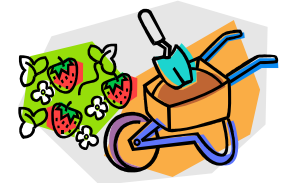
Name \_\_\_\_\_

Address \_\_\_\_\_

Phone # \_\_\_\_\_

E-mail \_\_\_\_\_

Date responding \_\_\_\_\_



Please return this registration form by mail No later than April 9, 2010 ( flyer is a self-mailer) or fax to:

**Riverdale Temple**  
 4545 Independence Avenue  
 Riverdale, NY 10471  
 Fax# 718-543-1492

Thank you for returning your form promptly!

